

DEVELOPED BY

**TARAF**  
PROPERTIES

# TARAF 3

R E S I D E N C E

PRESENTED BY

 **DRIVEN**

**Forbes**  
GLOBAL PROPERTIES



A HIGHER  
QUALITY OF  
LIVING

TARAF 3  
RESIDENCE

# TARAF 3

RESIDENCE

Where boutique living meets smart investment in  
Jumeirah Village Circle



# REFINED URBAN LIVING IN THE HEART OF JVC

TARAF 3 Residence is an exclusive mid-rise development designed for those who appreciate quality, comfort, and long-term value. Perfectly positioned in one of Dubai's most sought-after family communities, this boutique project offers refined urban living with exceptional investment potential.



# PROJECT HIGHLIGHTS

Premium Mid-Rise Living in  
Jumeirah Village Circle

An elegant tower featuring  
GROUND + 4 PODIUM LEVELS + 13 RESIDENTIAL FLOORS

## OFFERING:

### Stylish Studios:

Efficient spaces designed for modern living

### 1-Bedroom Apartments:

Perfect for young professionals and couples

### 2-Bedroom Apartments:

Spacious layouts for growing families

### 2-Bedroom + Study:

Ideal for those working from home

TARAF 3 RESIDENCE





## EUROPEAN EXCELLENCE

Every residence features premium finishes and materials sourced from Spain, Italy, and Germany, ensuring timeless design, superior craftsmanship, and lasting durability.

## GROUND FLOOR RETAIL

Two strategically positioned retail units enhance community convenience and investment appeal.



# PRIME LOCATION

- 1 DUBAI BUTTERFLY GARDEN  
12 MINUTES
- 2 GLOBAL VILLAGE  
15 MINUTES
- 3 IMG WORLDS OF ADVENTURE  
16 MINUTES
- 4 MALL OF THE EMIRATES  
18 MINUTES
- 5 BURJ KHALIFA  
19 MINUTES
- 6 DUBAI MALL  
19 MINUTES
- 7 BLUEWATERS ISLAND  
19 MINUTES
- 8 DUBAI INTERNATIONAL AIRPORT (DXB)  
24 MINUTES
- 9 DUBAI MARINA  
19 MINUTES
- 10 PALM JUMEIRAH  
19 MINUTES
- 11 JUMEIRAH BEACH  
20 MINUTES
- 12 AL MAKTOUM INTERNATIONAL AIRPORT (DWC)  
24 MINUTES

## Jumeirah Village Circle – Dubai’s Thriving Family Community

A master-planned development by Nakheel, JVC is strategically positioned between Mohammed Bin Zayed Road and Al Khail Road, offering seamless connectivity across Dubai.

### Minutes Away From:

- Dubai Marina & JBR
- Circle Mall & Five Hotel
- Jumeirah Village Triangle (JVT)
- The Springs & Dubai Production City
- Community parks and sports facilities

TARAF 3 Residence is surrounded by lush parks, retail destinations, and family-friendly amenities, making it ideal for both lifestyle and investment.



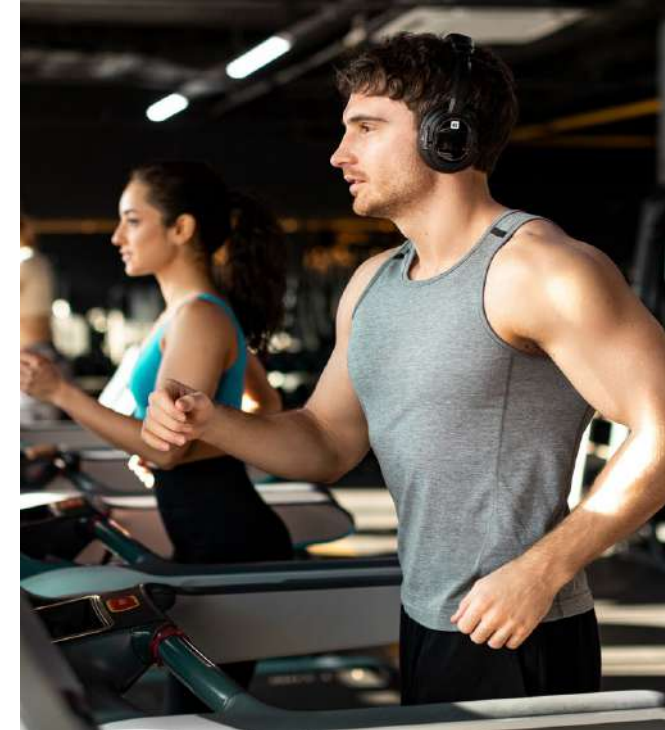


# LIFESTYLE AMENITIES

Thoughtfully designed spaces that enhance everyday living:



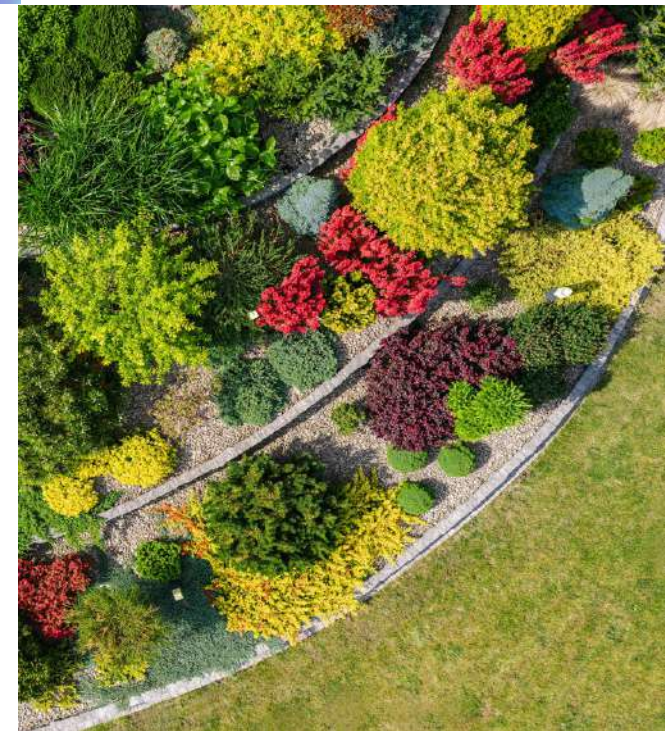
MODERN  
FITNESS  
CENTER



OUTDOOR  
SWIMMING  
POOL



LANDSCAPED  
GARDENS & GREEN  
SPACE



COVERED  
PARKING



24/7 SECURITY  
& CONCIERGE  
SERVICES



RETAIL  
CONVENIENCE AT  
GROUND LEVEL



# RESIDENCE MIX

24

STUDIOS

86

1 BEDROOM

39

2 BEDROOMS

2

RENTAL UNITS

151

TOTAL UNITS

TARAF3  
RESIDENCE



# FLEXIBLE PAYMENT PLAN

ONLY 40% DURING CONSTRUCTION | 60% ON HANDOVER

10%

DOWN PAYMENT

10%  
+4%DLD

1 MONTH FROM  
BOOKING

10%

4 MONTHS FROM  
SPA

10%

8 MONTHS FROM  
SPA

60%

ON COMPLETION  
(Q3 2028)

## Q3 2028

COMPLETION















# TARA F3

FLOOR PLAN



# TARAF3

FLOOR PLAN



GROUND FLOOR



PODIUM 1

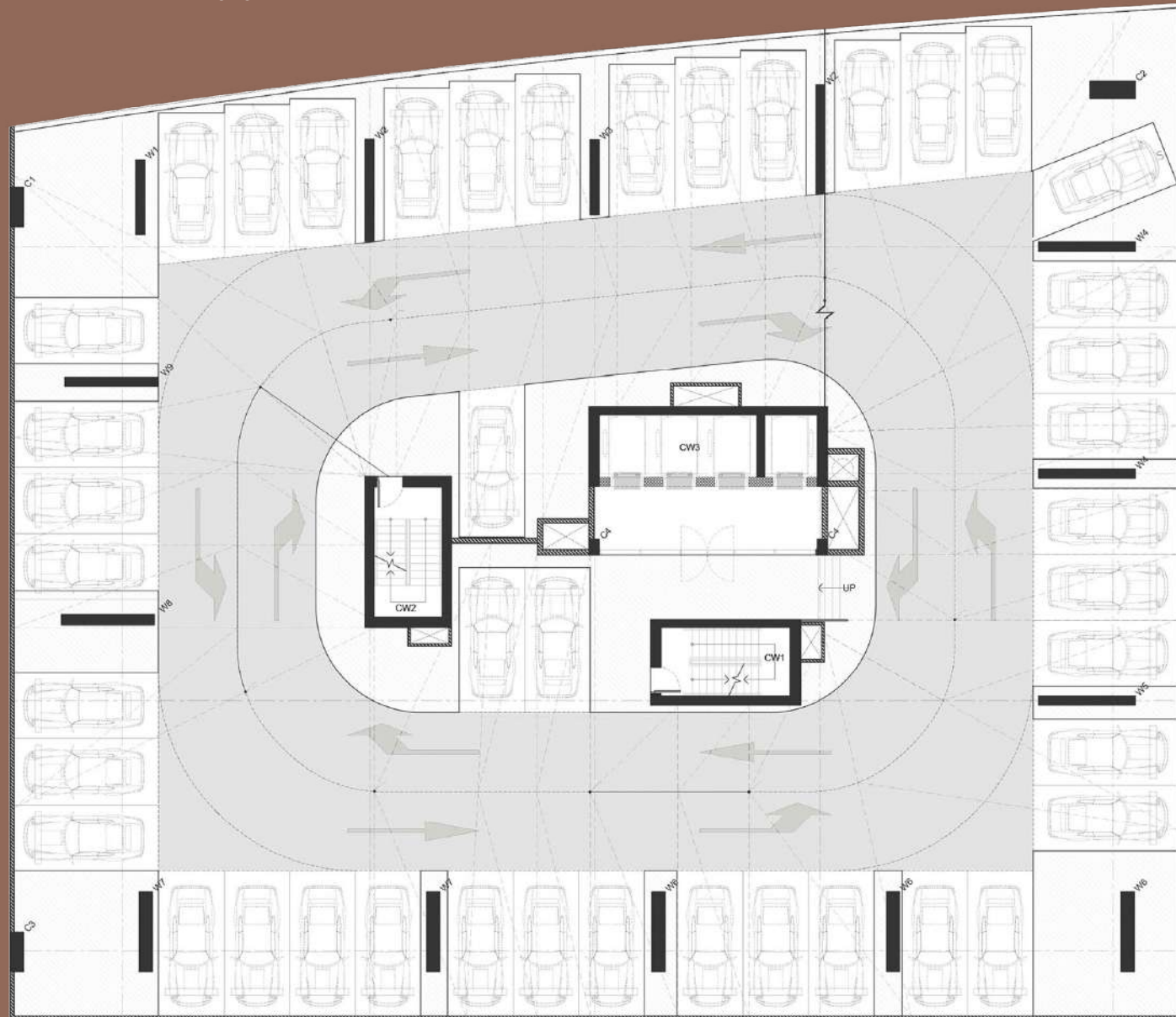
- All dimensions are in metric and measured from finish to finish excluding construction tolerances.
- All materials, dimensions and drawings are approximate only.
- Information is subject to change without notice at developers discretion.

- Actual area may vary from stated area.
- Drawings are not scaled.
- All images are for illustrative purposes only and do not represent the actual size, features, specifications, fitting and furnishings.

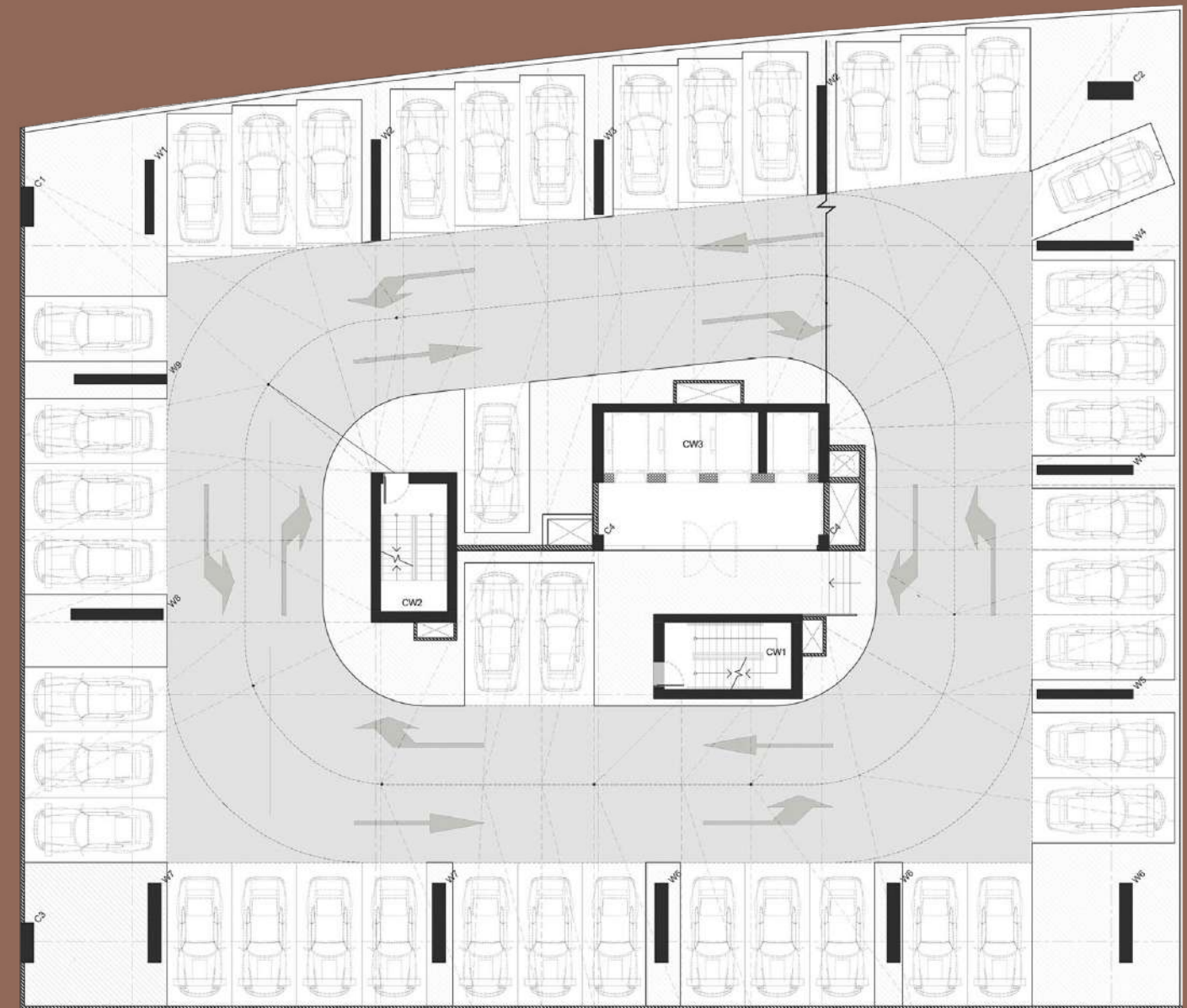
- The developer reserves the right to make revisions/alterations at its absolute discretion, without any liability whatsoever.

# TARAF 3

FLOOR PLAN



PODIUM 2



PODIUM 3

- All dimensions are in metric and measured from finish to finish excluding construction tolerances.
- All materials, dimensions and drawings are approximate only.
- Information is subject to change without notice at developers discretion.

- Actual area may vary from stated area.
- Drawings are not scaled.
- All images are for illustrative purposes only and do not represent the actual size, features, specifications, fitting and furnishings.

- The developer reserves the right to make revisions/alterations at its absolute discretion, without any liability whatsoever.

# TARAF3

FLOOR PLAN

- 2 BEDROOM APARTMENT
- 1 BEDROOM APARTMENT
- STUDIO APARTMENT
- SERVICE ROOMS
- RETAIL
- GYM



PODIUM 4



FIRST FLOOR

- All dimensions are in metric and measured from finish to finish excluding construction tolerances.
- All materials, dimensions and drawings are approximate only.
- Information is subject to change without notice at developers discretion.

- Actual area may vary from stated area.
- Drawings are not scaled.
- All images are for illustrative purposes only and do not represent the actual size, features, specifications, fitting and furnishings.

- The developer reserves the right to make revisions/alterations at its absolute discretion, without any liability whatsoever.

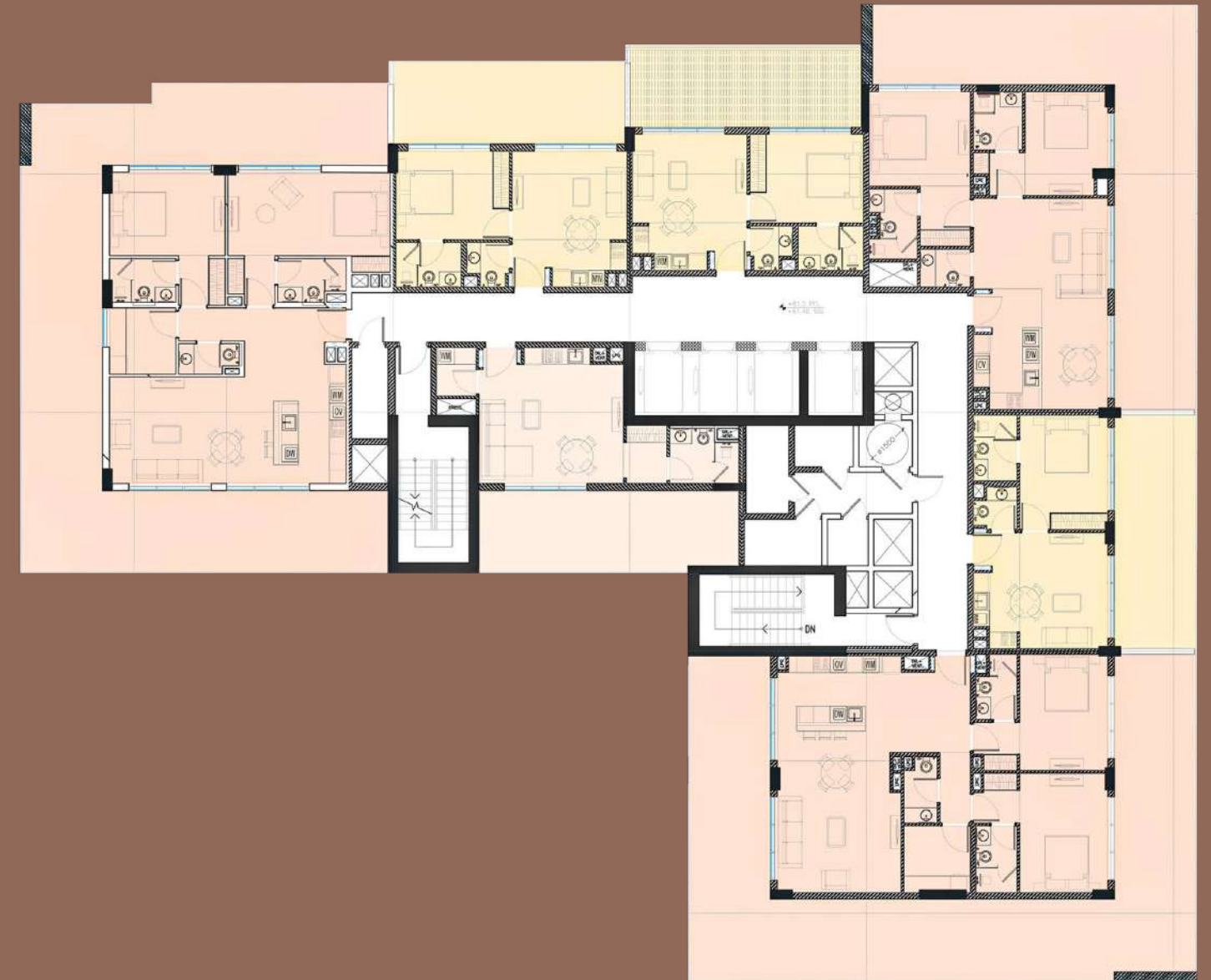
# TARAF3

FLOOR PLAN

- 2 BEDROOM APARTMENT
- 1 BEDROOM APARTMENT
- STUDIO APARTMENT
- SERVICE ROOMS
- RETAIL
- GYM



2ND TO 12TH FLOOR



13TH FLOOR

- All dimensions are in metric and measured from finish to finish excluding construction tolerances.
- All materials, dimensions and drawings are approximate only.
- Information is subject to change without notice at developers discretion.

- Actual area may vary from stated area.
- Drawings are not scaled.
- All images are for illustrative purposes only and do not represent the actual size, features, specifications, fitting and furnishings.

- The developer reserves the right to make revisions/alterations at its absolute discretion, without any liability whatsoever.



# TARAF

PROPERTIES



## ABOUT TARAF PROPERTIES

Taraf Properties shapes elevated lifestyles by placing people at the heart of everything they do. With a consumer-centric design approach, the company creates places that inspire happy, healthy, and active lives within beautiful surroundings. Their boutique projects form close-knit, private communities where like-minded individuals can connect and thrive.

## CRAFTING EXCLUSIVE PROPERTIES

Taraf Properties maintains an unwavering commitment to architectural and design excellence. Their iconic, design-led properties feature thoughtful layouts and elegant spaces executed with meticulous attention to detail. Each property is carefully planned to ensure timeless appeal and a seamless living experience.

## CREATING LASTING VALUE

Built with the future in mind, Taraf Properties' developments are consciously designed to stand the test of time. Through their selective portfolio approach, the company focuses on developing limited collections of high-quality properties in prime locations, ensuring outstanding lifestyle experiences that deliver lasting value.

# TARAF 1 RESIDENCE: JUMEIRAH VILLAGE CIRCLE

A contemporary residential tower offering studios and 1 & 2-bedroom apartments in the heart of JVC. Combining urban convenience with suburban tranquility, Taraf 1 has established the developer's reputation for quality freehold developments that appeal to both end-users and investors.

TARAF 3 RESIDENCE



# TARAF 2 RESIDENCE: JUMEIRAH VILLAGE TRIANGLE

Located in JVT District 5, Taraf 2 continues the legacy with modern design, high-quality finishes, and competitive pricing. The development delivers accessible living within a vibrant community, reinforcing Taraf Properties' commitment to creating exceptional value in prime Dubai locations.





DRIVEN | Forbes  
GLOBAL PROPERTIES

# ABOUT DRIVEN PROPERTIES

# ABOUT DRIVEN PROPERTIES

Driven Properties is an award-winning real estate brokerage and property management company headquartered in Dubai. Since its inception in 2012, the company has been raising standards for the industry and has grown into one of the region's leading full-service real estate consultancies.

As a multi-faceted company, Driven Properties offers in-house asset management, property management, and market advice in addition to property sale and leasing services -- a real one-stop shop.

Driven Properties is now an exclusive member of Forbes Global Properties, an invitation-only consortium of leading luxury real estate firms reserved for only the 100 most elite brokerages in the world.



PRESENTED BY



The information in this document is indicative and is intended to act as a guide only as to the finished product. The finished product may vary from the information provided. These particulars should not be relied upon as statements of fact or representations and applicants must satisfy themselves by inspection or otherwise as to their correctness. This information does not constitute a contract or warranty. The dimensions given on plans are subject to minor variations and are not intended to be used for carpet sizes, appliance sizes or items of furniture.